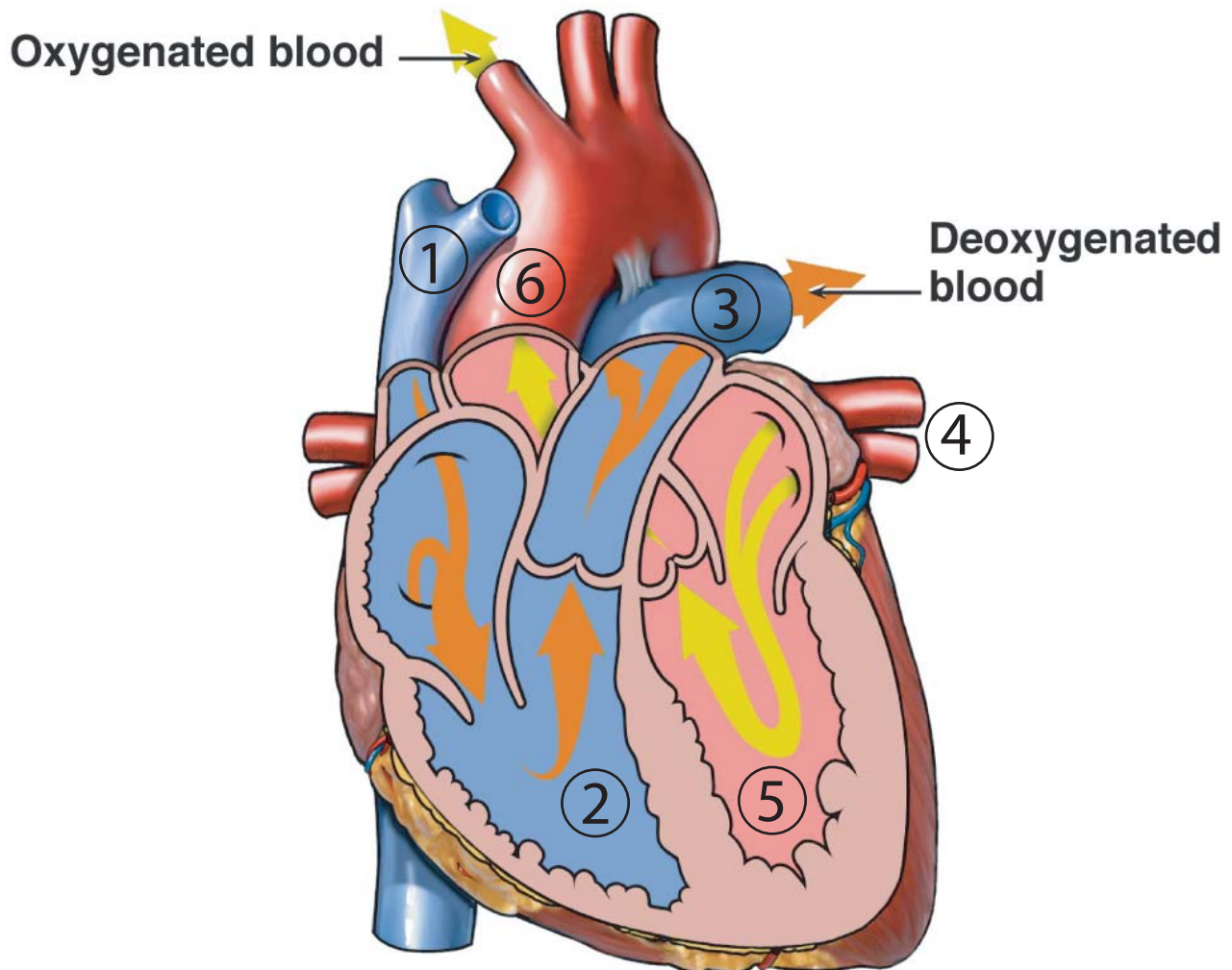




How a Healthy Heart Functions

Normal Blood Flow



1. Oxygen-poor (blue) blood returns to the right atrium from the body
2. The blood travels to the right ventricle
3. It is pumped through the pulmonary artery into the lungs where it receives oxygen
4. Oxygen-rich (red) blood returns to the left atrium from the lungs
5. The blood passes into the left ventricle
6. It is pumped through the aorta out to the body